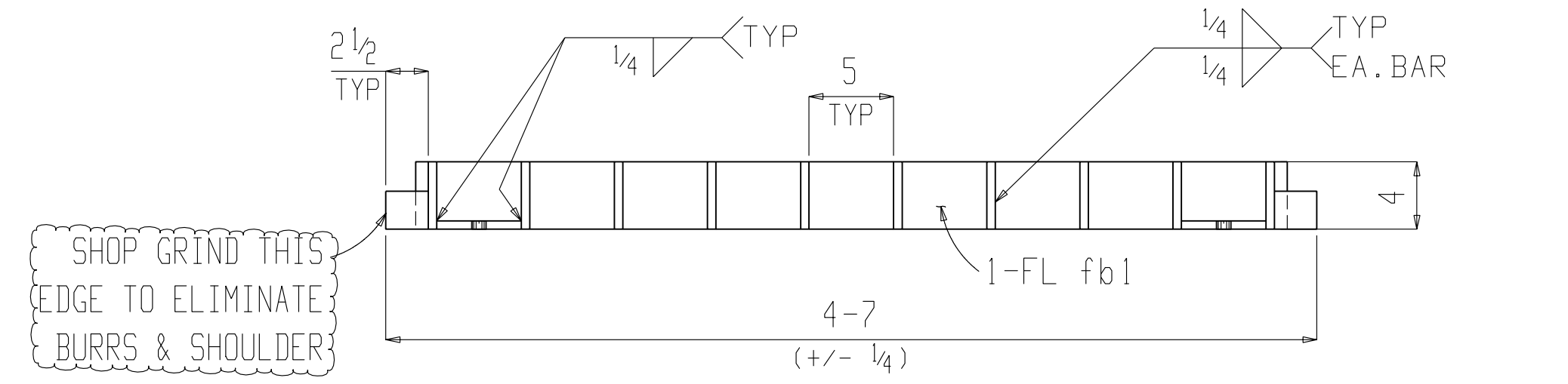
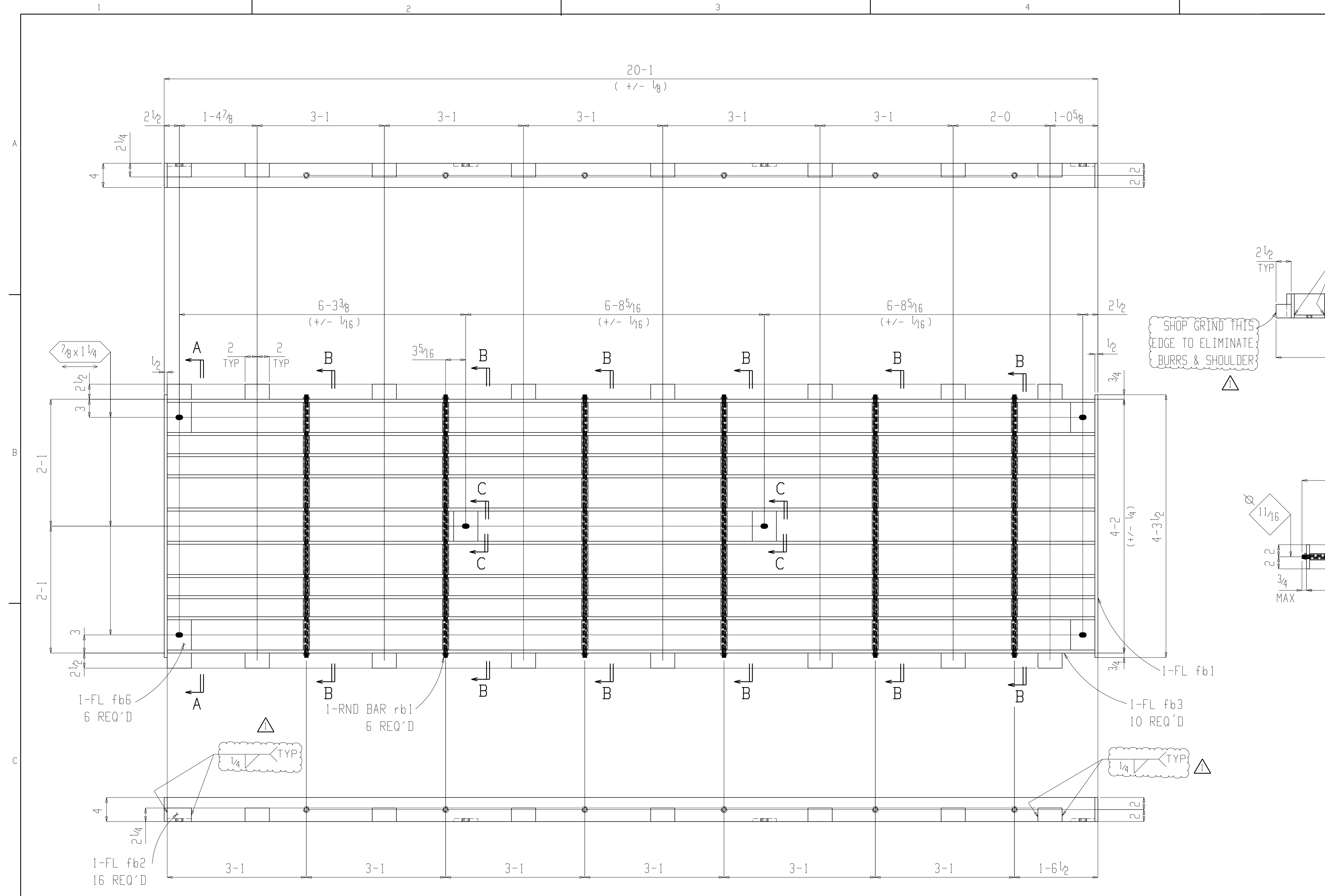
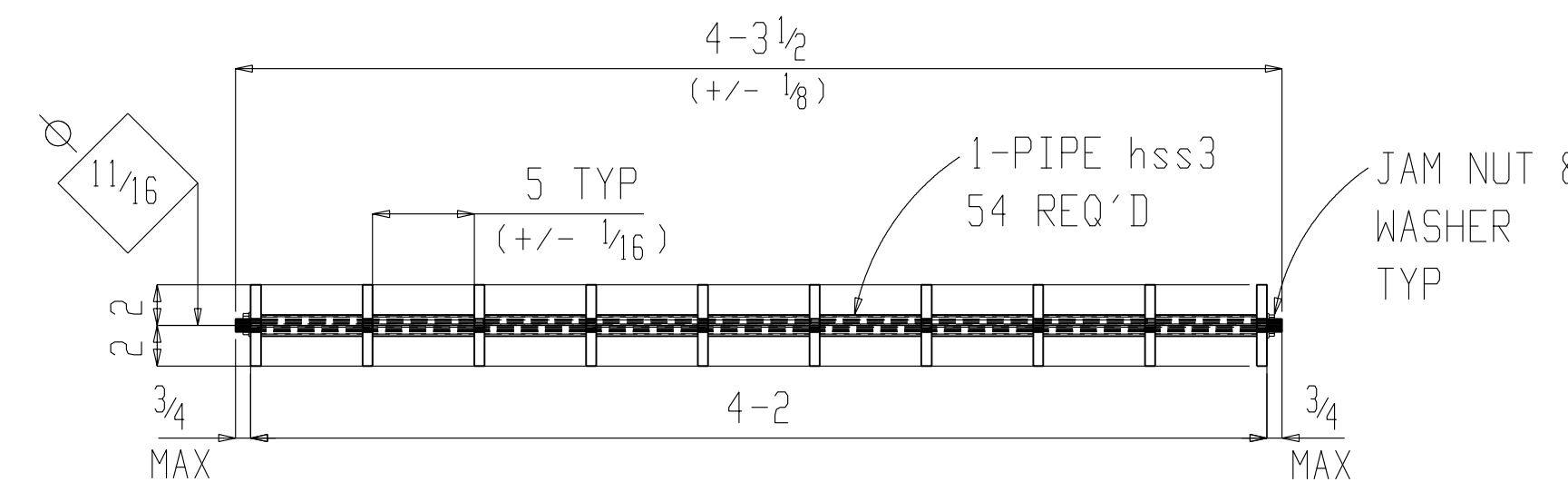


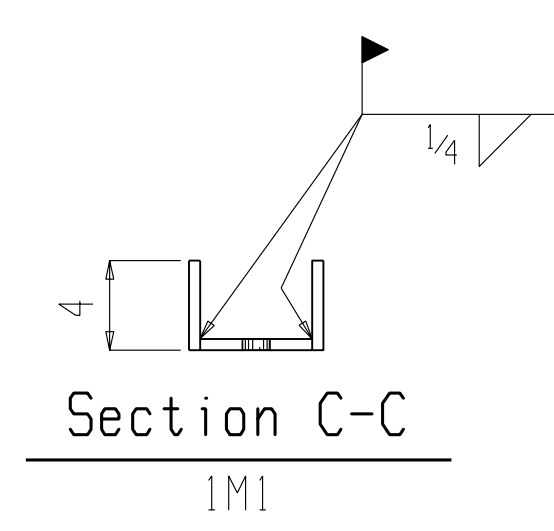
BILL OF MATERIAL								
S.F.C.O.	Qty	Description	Length FT IN	Mark	Mat. Grade	Remarks	Adv. Bill	Weight
	1	ONE TRASH RACK SPACING PANEL		1M1				1587
	54	PIPE 3/4 STD (SCHED 40)	0 5	hss3	A500B	PIPE		25
	16	FB2 1/2x2 1/4	0 4	fb2	A36	END SPACER		102
	10	FB1 1/2x4	20 0	fb3	A572-50	TRASH RACK		1361
	2	FB1 1/2x4	4 3 1/2	fb1	A572-50	TOP & BASE PLATE		58
	6	FB1 1/2x5	0 4	fb6	A36	CONNECTOR PLATE		14
	6	RB1	4 3 1/2	rb1	A36	THREADED ROD		27
	12	5/8 JAM NUT & WASHER						



Section A-A
1M1



Section B-B
1M1



Section C-C
1M1

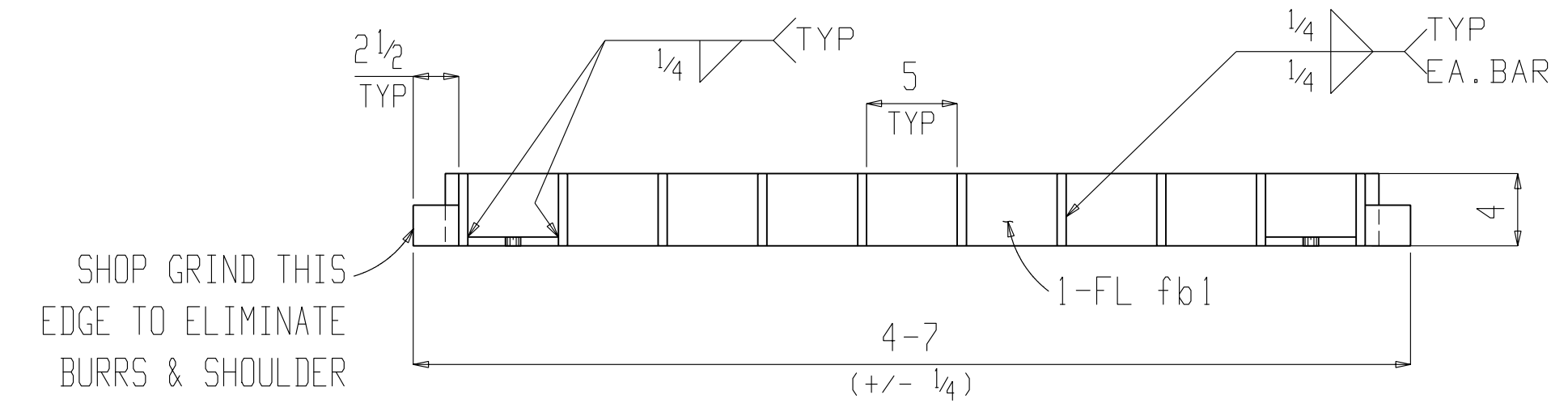
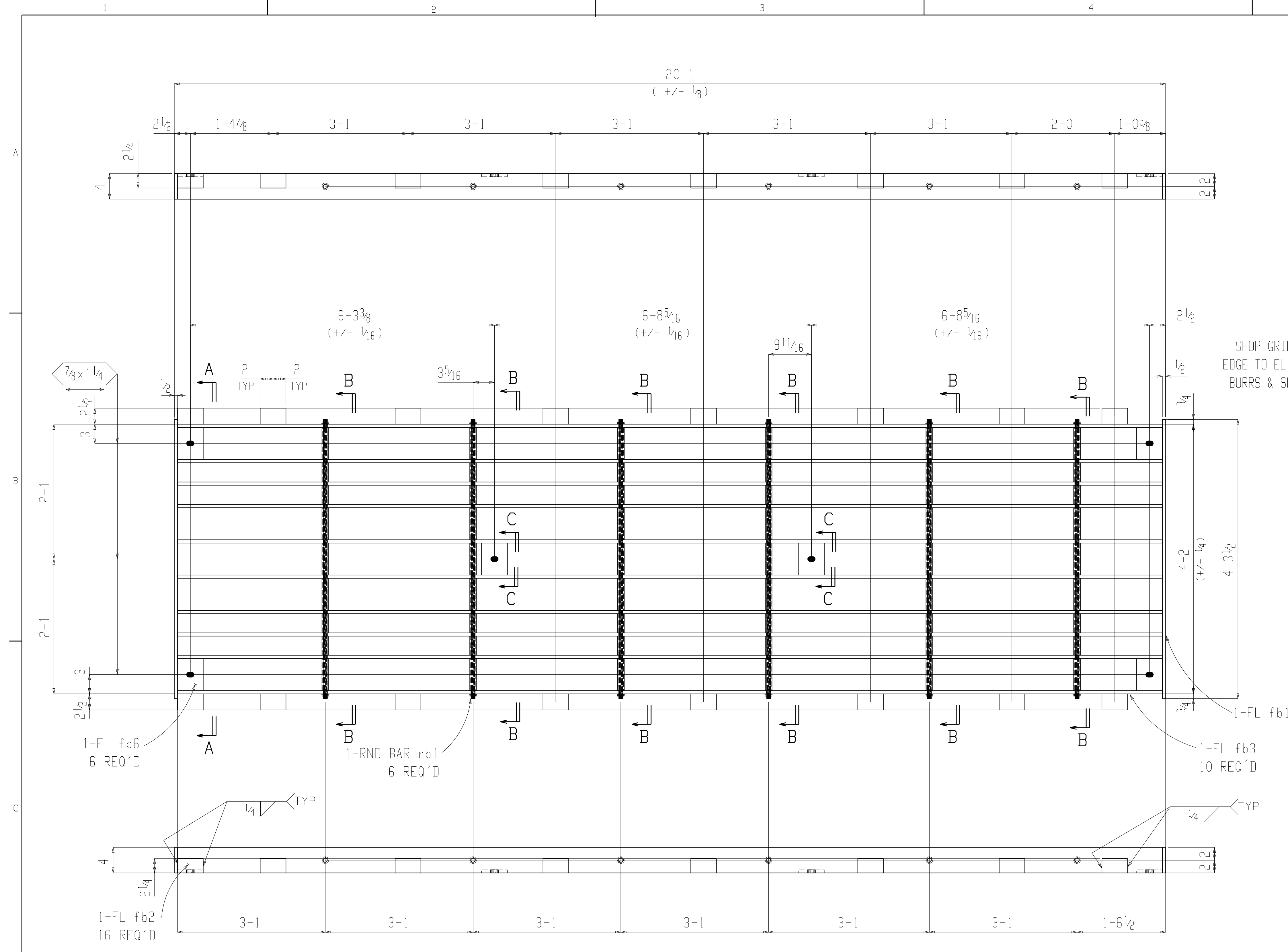
NOTE:
THESE PLATES WILL BE SHIPPED LOOSE AND FIELD WELDED

ONE TRASH RACK 5" SPACING PANEL 1M1

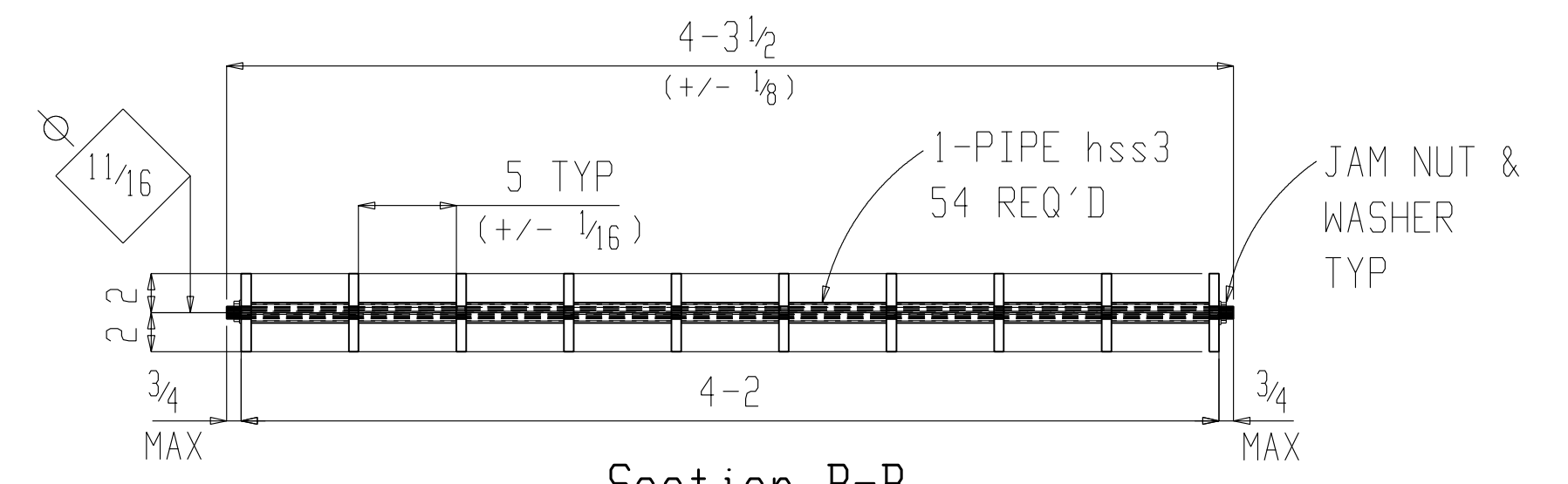
NOTE:

1. ALL WORK SHALL CONFORM TO THE STANDARDS LISTED IN THE AMERICAN INSTITUTE OF STEEL CONSTRUCTION (AISC) MANUAL OF STEEL CONSTRUCTION 13TH EDITION AND THE 2009 IBC CODE
2. ALL STRUCTURAL STEEL FOR THE TRASH RACK BARS SHALL CONFORM TO ASTM A572 WITH A YIELD STRESS OF 50 KSI; EXCEPT AS NOTED. ALL PIPE FOR SPACERS TO CONFORM TO ASTM-A500 GRADE B. ALL STRUCTURAL STEEL FOR MISCELLANEOUS PIECES TO CONFORM TO ASTM A36 STEEL.
3. ALL WELDING SHALL BE IN ACCORDANCE WITH AWS D1.1 "STRUCTURAL WELDING CODE - STEEL", LATEST EDITION. WELDING SHALL BE WITH E70XX ELECTRODES.
4. ALL WELDERS SHALL BE AWS CERTIFIED AND SHALL PROVIDE THE ENGINEER WITH PROOF OF CERTIFICATION.

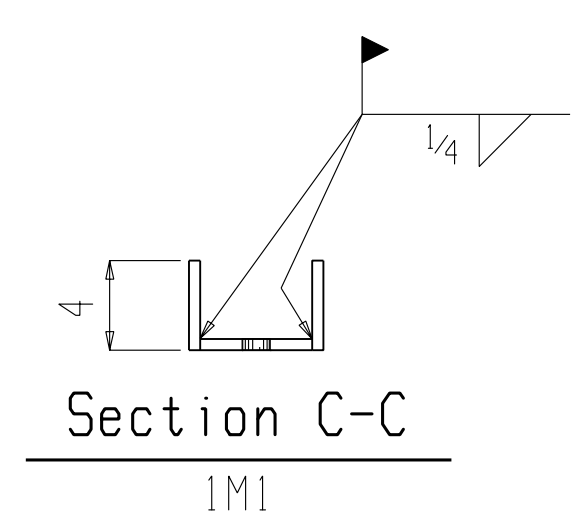
BILL OF MATERIAL									
S P C O	Qty	Description	Length		Mark	Mat. Grade	Remarks	Adv. Bill	Weight
			FT	IN					
	65	TRASH RACK SPACING PANEL			1A-M1				100750
	3510	PIPE 3/4 STD (SCHED 40)	0	5	hss3	A500B	PIPE		
	1040	FB2 1/2x2 1/4	0	4	fb2	A36	END SPACER		6240
	650	FB1 1/2x4	20	0	fb3	A572-50	TRASH RACK		88400
	130	FB1 1/2x4	4	3 1/2	fb1	A572-50	TOP & BASE PLATE		3770
	390	FB1 1/2x5	0	4	fb6	A36	CONNECTOR PLATE		780
	390	RB1	4	3 1/2	rb1	A36	THREADED ROD		1560
	780	3/8 JAM NUT & WASHER							



Section A-A
1M1



Section B-B
1M1



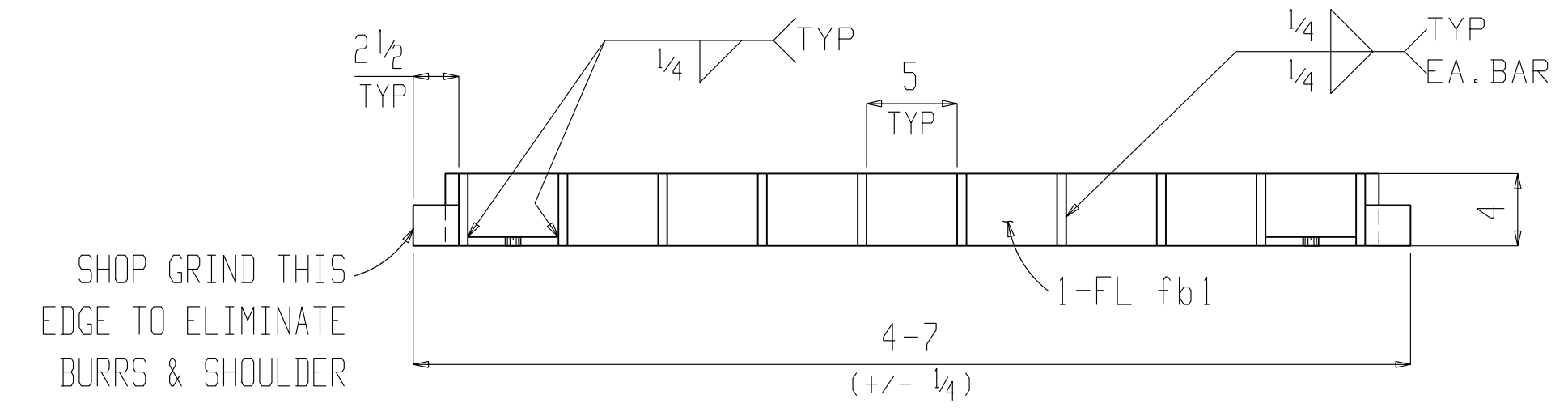
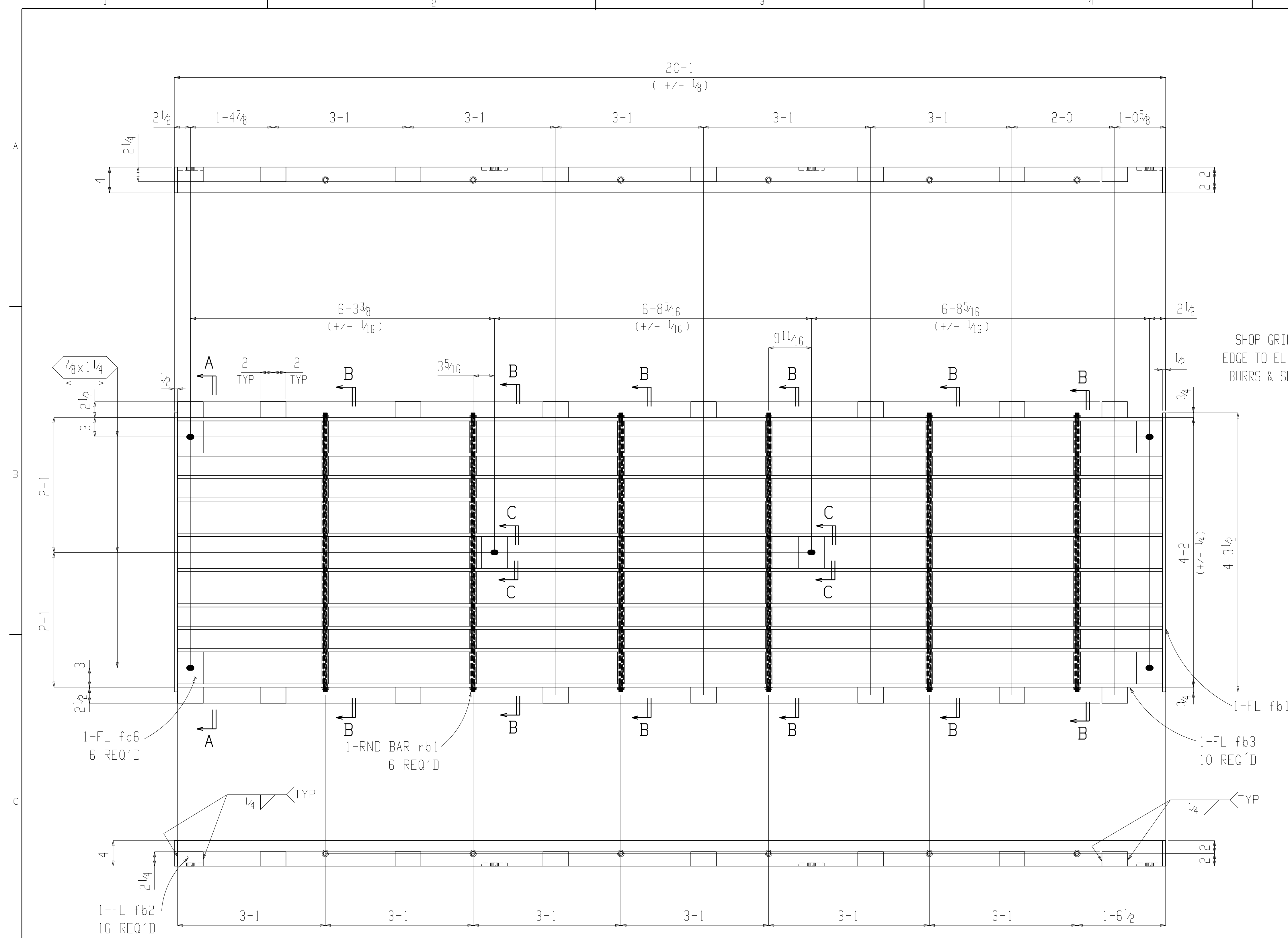
Section C-C
1M1

NOTE:
THESE PLATES WILL BE SHIPPED LOOSE AND FIELD WELDED

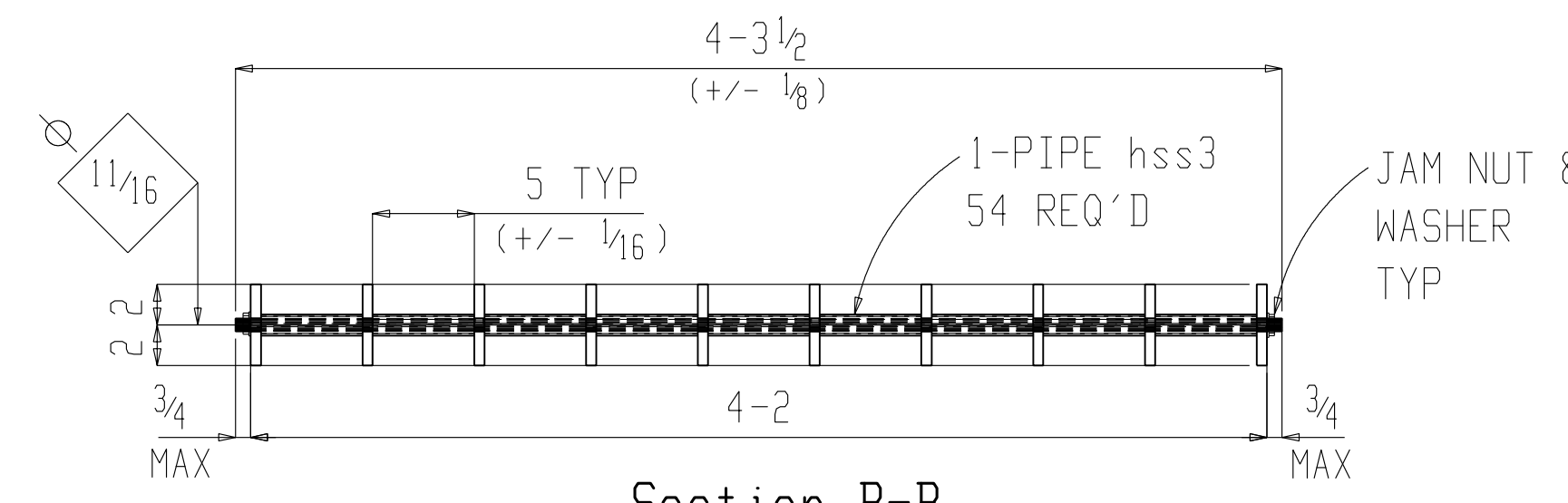
65 TRASH RACK 5" SPACING PANELS 1A-M1
(65 Bottom Panels)

- NOTE:**
1. ALL WORK SHALL CONFORM TO THE STANDARDS LISTED IN THE AMERICAN INSTITUTE OF STEEL CONSTRUCTION (AISC) MANUAL OF STEEL CONSTRUCTION 13TH EDITION AND THE 2009 IBC CODE
 2. ALL STRUCTURAL STEEL FOR THE TRASH RACK BARS SHALL CONFORM TO ASTM A572 WITH A YIELD STRESS OF 50 KSI; EXCEPT AS NOTED. ALL PIPE FOR SPACERS TO CONFORM TO ASTM-A500 GRADE B. ALL STRUCTURAL STEEL FOR MISCELLANEOUS PIECES TO CONFORM TO ASTM A36 STEEL.
 3. ALL WELDING SHALL BE IN ACCORDANCE WITH AWS D1.1 "STRUCTURAL WELDING CODE - STEEL", LATEST EDITION. WELDING SHALL BE WITH E70XX ELECTRODES.
 4. ALL WELDERS SHALL BE AWS CERTIFIED AND SHALL PROVIDE THE ENGINEER WITH PROOF OF CERTIFICATION.

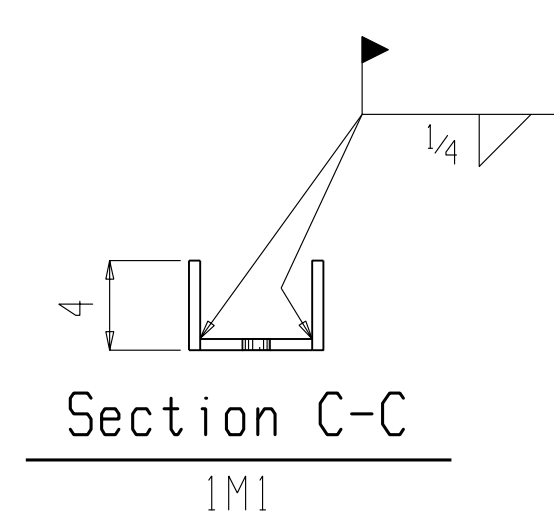
BILL OF MATERIAL									
S P C O	Qty	Description	Length		Mark	Mat. Grade	Remarks	Adv. Bill	Weight
			FT	IN					
	44	TRASH RACK SPACING PANEL			1B-M1				68200
	2376	PIPE 3/4 STD (SCHED 40)	0	5	hss3	A500B	PIPE		
	704	FB2 1/2x2 1/4	0	4	fb2	A36	END SPACER		4224
	440	FB1 1/2x4	20	0	fb3	A572-50	TRASH RACK		59840
	88	FB1 1/2x4	4	3 1/2	fb1	A572-50	TOP & BASE PLATE		2552
	264	FB1 1/2x5	0	4	fb6	A36	CONNECTOR PLATE		528
	264	RB 3/8	4	3 1/2	rb1	A36	THREADED ROD		1056
	528	3/8 JAM NUT & WASHER							



Section A-A
1M1



Section B-B
1M1



Section C-C
1M1

NOTE:
THESE PLATES WILL BE SHIPPED LOOSE AND FIELD WELDED

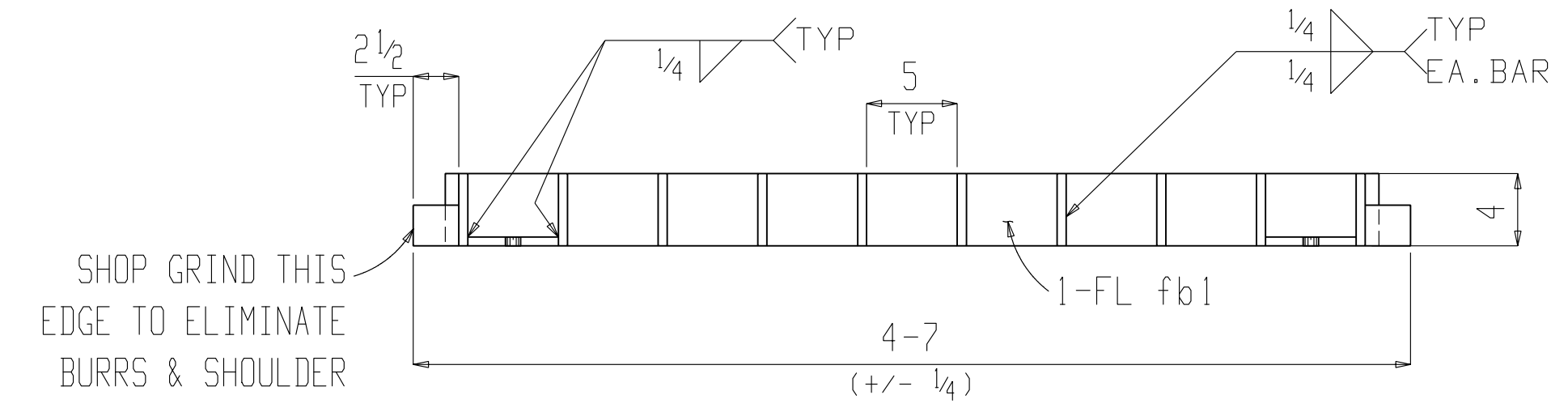
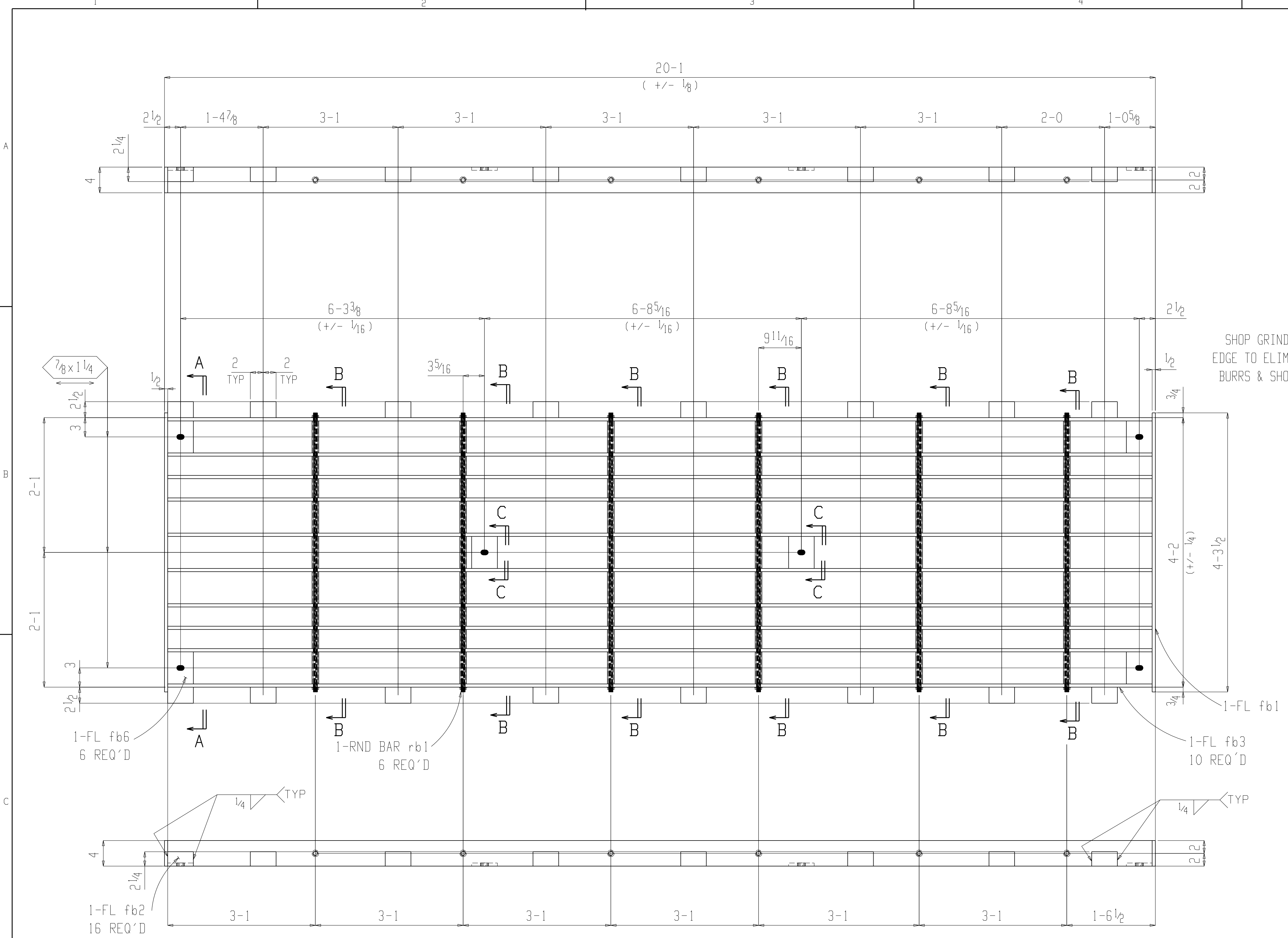
44 TRASH RACK 5" SPACING PANELS 1B-M1

(22 Intermediate Panels)
(22 Bottom Panels)

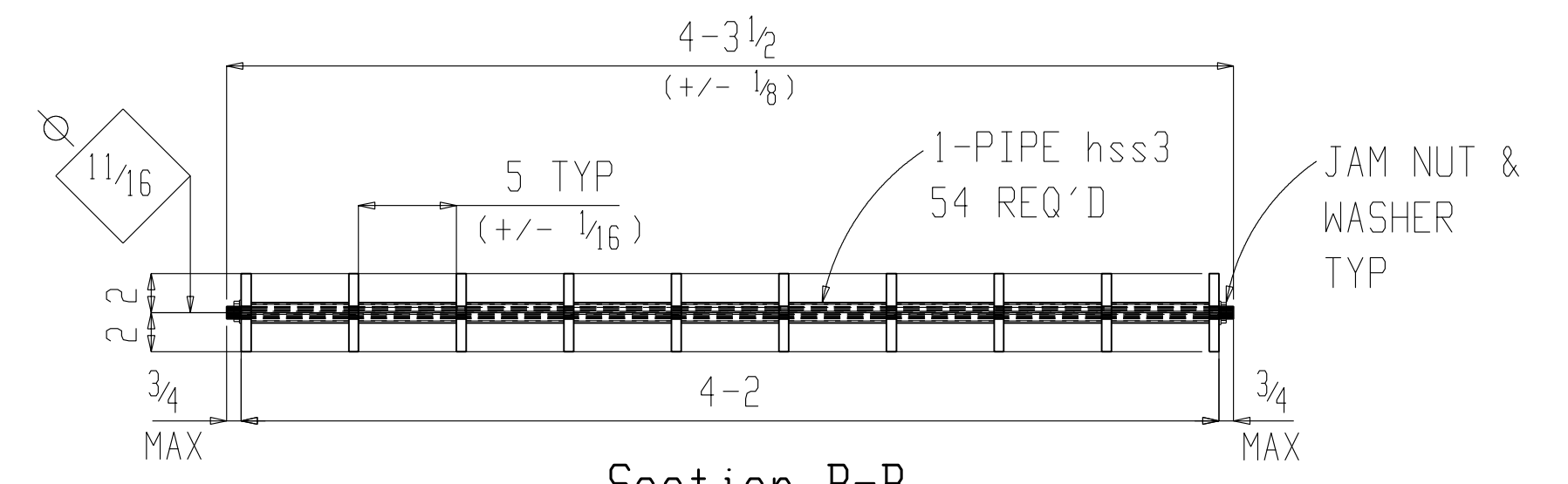
NOTE:

1. ALL WORK SHALL CONFORM TO THE STANDARDS LISTED IN THE AMERICAN INSTITUTE OF STEEL CONSTRUCTION (AISC) MANUAL OF STEEL CONSTRUCTION 13TH EDITION AND THE 2009 IBC CODE
2. ALL STRUCTURAL STEEL FOR THE TRASH RACK BARS SHALL CONFORM TO ASTM A572 WITH A YIELD STRESS OF 50 KSI; EXCEPT AS NOTED. ALL PIPE FOR SPACERS TO CONFORM TO ASTM-A500 GRADE B. ALL STRUCTURAL STEEL FOR MISCELLANEOUS PIECES TO CONFORM TO ASTM A36 STEEL.
3. ALL WELDING SHALL BE IN ACCORDANCE WITH AWS D1.1 "STRUCTURAL WELDING CODE - STEEL", LATEST EDITION. WELDING SHALL BE WITH E70XX ELECTRODES.
4. ALL WELDERS SHALL BE AWS CERTIFIED AND SHALL PROVIDE THE ENGINEER WITH PROOF OF CERTIFICATION.

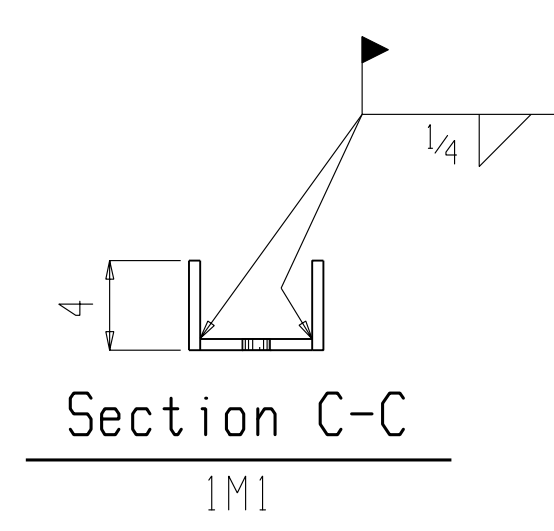
BILL OF MATERIAL									
S P C O	Qty	Description	Length		Mark	Mat. Grade	Remarks	Adv. Bill	Weight
			FT	IN					
	64	TRASH RACK SPACING PANEL			1C-M1				99200
	3456	PIPE 3/4 STD (SCHED 40)	0	5	hss3	A500B	PIPE		
	1024	FB2 1/2x2 1/4	0	4	fb2	A36	END SPACER		6144
	640	FB1 1/2x4	20	0	fb3	A572-50	TRASH RACK		87040
	128	FB1 1/2x4	4	3 1/2	fb1	A572-50	TOP & BASE PLATE		3712
	384	FB1 1/2x5	0	4	fb6	A36	CONNECTOR PLATE		768
	384	RB 3/8	4	3 1/2	rb1	A36	THREADED ROD		1536
	768	3/8 JAM NUT & WASHER							



Section A-A
1M1



Section B-B
1M1



Section C-C
1M1

NOTE:
THESE PLATES WILL BE SHIPPED LOOSE AND FIELD WELDED

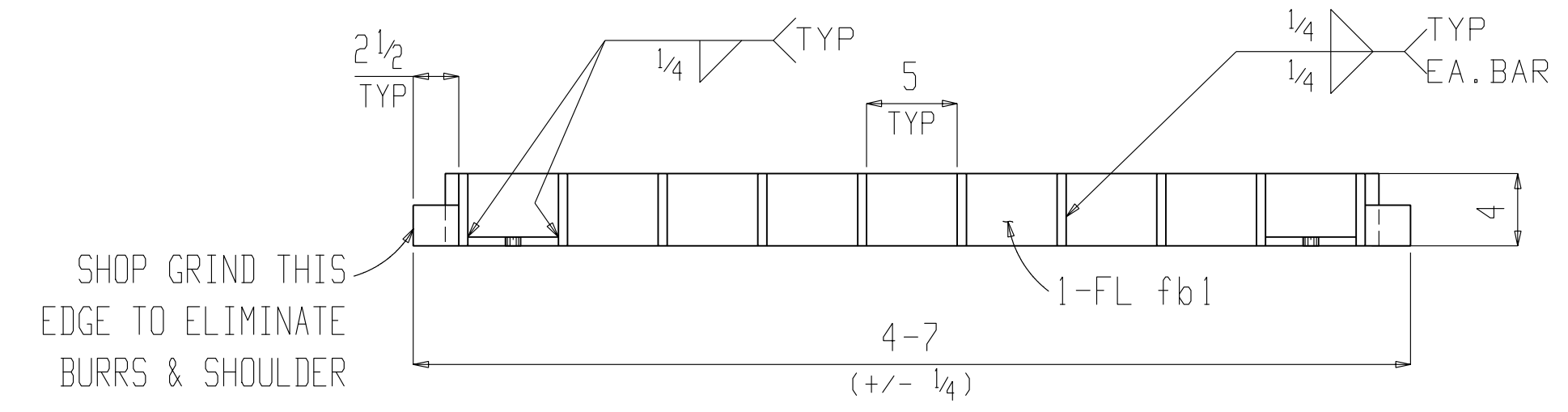
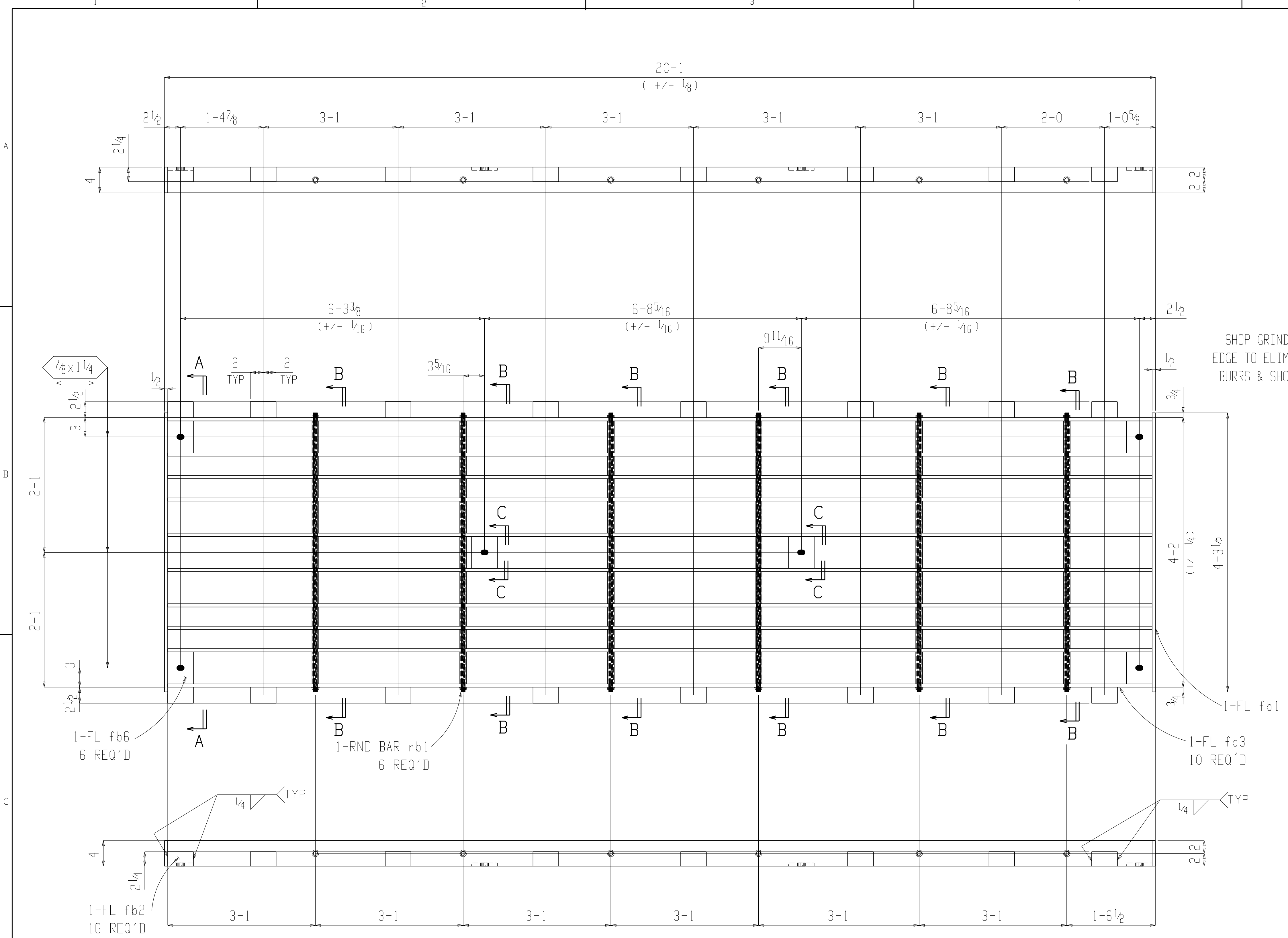
64 TRASH RACK 5" SPACING PANELS 1C-M1

(32 Intermediate Panels)
(32 Bottom Panels)

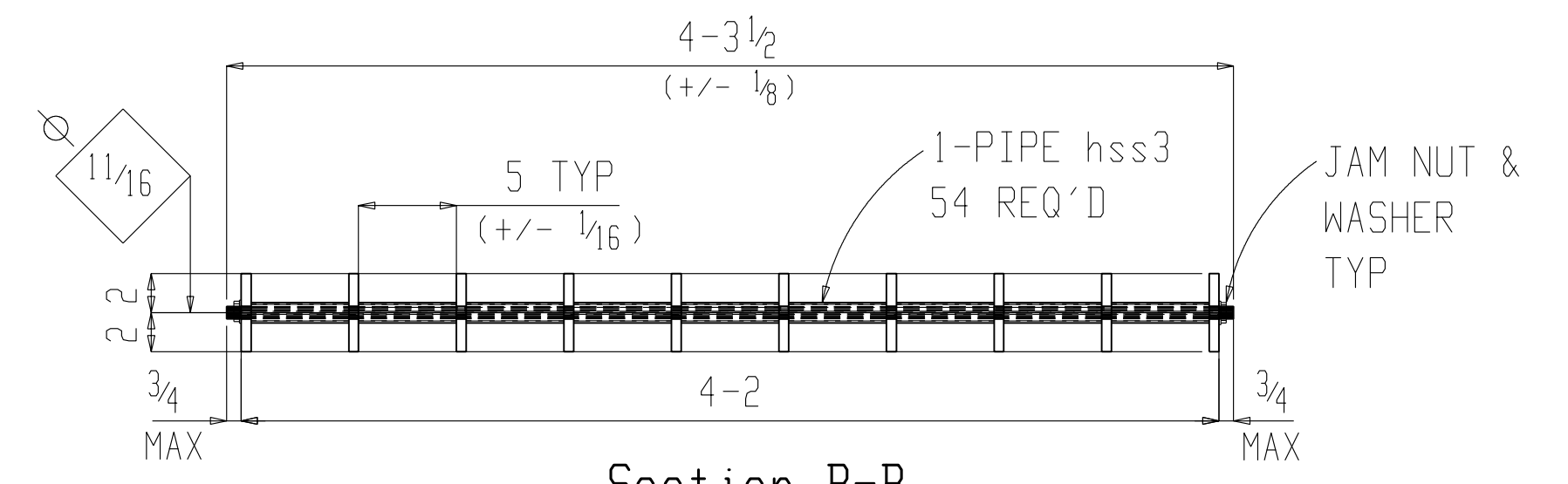
NOTE:

1. ALL WORK SHALL CONFORM TO THE STANDARDS LISTED IN THE AMERICAN INSTITUTE OF STEEL CONSTRUCTION (AISC) MANUAL OF STEEL CONSTRUCTION 13TH EDITION AND THE 2009 IBC CODE
2. ALL STRUCTURAL STEEL FOR THE TRASH RACK BARS SHALL CONFORM TO ASTM A572 WITH A YIELD STRESS OF 50 KSI; EXCEPT AS NOTED. ALL PIPE FOR SPACERS TO CONFORM TO ASTM-A500 GRADE B. ALL STRUCTURAL STEEL FOR MISCELLANEOUS PIECES TO CONFORM TO ASTM A36 STEEL.
3. ALL WELDING SHALL BE IN ACCORDANCE WITH AWS D1.1 "STRUCTURAL WELDING CODE - STEEL", LATEST EDITION. WELDING SHALL BE WITH E70XX ELECTRODES.
4. ALL WELDERS SHALL BE AWS CERTIFIED AND SHALL PROVIDE THE ENGINEER WITH PROOF OF CERTIFICATION.

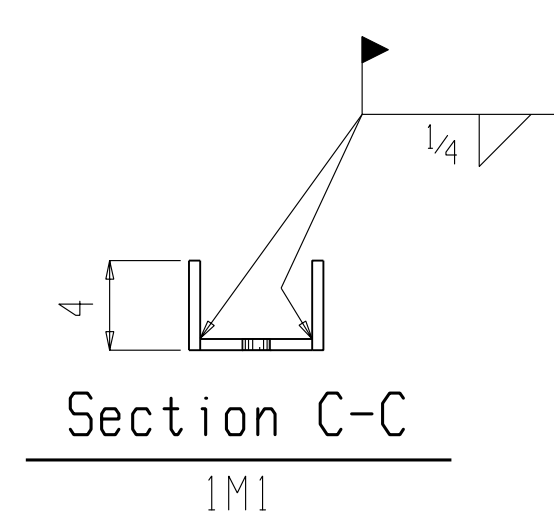
BILL OF MATERIAL									
S F C O	Qty	Description	Length		Mark	Mat. Grade	Remarks	Adv. Bill	Weight
			FT	IN					
	40	TRASH RACK SPACING PANEL			1D-M1				62000
	2160	PIPE 3/4 STD (SCHED 40)	0	5	hss3	A500B	PIPE		
	640	FB2 1/2x2 1/4	0	4	fb2	A36	END SPACER		3840
	400	FB1 1/2x4	20	0	fb3	A572-50	TRASH RACK		54400
	80	FB1 1/2x4	4	3 1/2	fb1	A572-50	TOP & BASE PLATE		2320
	240	FB1 1/2x5	0	4	fb6	A36	CONNECTOR PLATE		480
	240	RB1	4	3 1/2	rb1	A36	THREADED ROD		960
	480	3/8 JAM NUT & WASHER							



Section A-A
1M1



Section B-B
1M1



Section C-C
1M1

NOTE:
THESE PLATES WILL BE SHIPPED LOOSE AND FIELD WELDED

40 TRASH RACK 5" SPACING PANELS 1D-M1

(20 Intermediate Panels)
(20 Bottom Panels)

NOTE:

1. ALL WORK SHALL CONFORM TO THE STANDARDS LISTED IN THE AMERICAN INSTITUTE OF STEEL CONSTRUCTION (AISC) MANUAL OF STEEL CONSTRUCTION 13TH EDITION AND THE 2009 IBC CODE
2. ALL STRUCTURAL STEEL FOR THE TRASH RACK BARS SHALL CONFORM TO ASTM A572 WITH A YIELD STRESS OF 50 KSI; EXCEPT AS NOTED. ALL PIPE FOR SPACERS TO CONFORM TO ASTM-A500 GRADE B. ALL STRUCTURAL STEEL FOR MISCELLANEOUS PIECES TO CONFORM TO ASTM A36 STEEL.
3. ALL WELDING SHALL BE IN ACCORDANCE WITH AWS D1.1 "STRUCTURAL WELDING CODE - STEEL", LATEST EDITION. WELDING SHALL BE WITH E70XX ELECTRODES.
4. ALL WELDERS SHALL BE AWS CERTIFIED AND SHALL PROVIDE THE ENGINEER WITH PROOF OF CERTIFICATION.