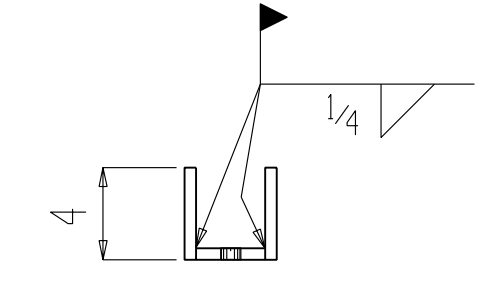


ONE TRASH RACK 3" SPACING PANEL 1M1

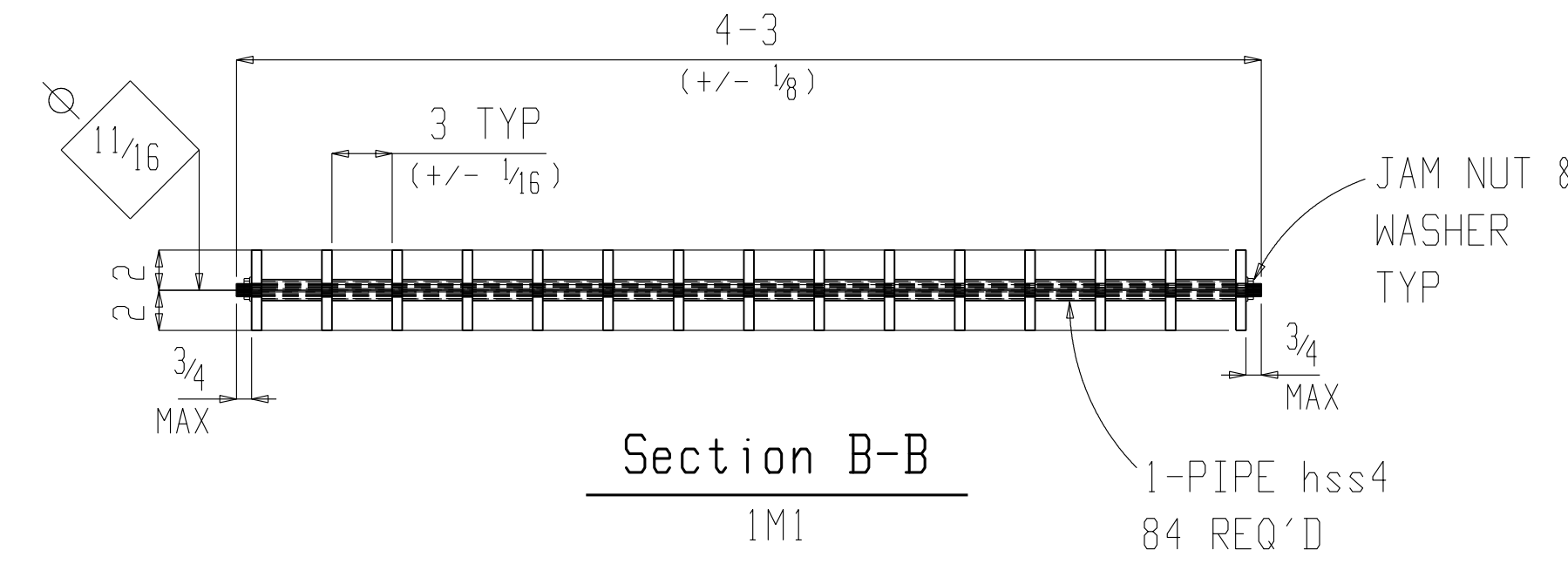
- NOTE:**
1. ALL WORK SHALL CONFORM TO THE STANDARDS LISTED IN THE AMERICAN INSTITUTE OF STEEL CONSTRUCTION (AISC) MANUAL OF STEEL CONSTRUCTION 13TH EDITION AND THE 2009 IBC CODE
 2. ALL STRUCTURAL STEEL FOR THE TRASH RACK BARS SHALL CONFORM TO ASTM A572 WITH A YIELD STRESS OF 50 KSI EXCEPT AS NOTED. ALL PIPE FOR SPACERS TO CONFORM TO ASTM-A500 GRADE B. ALL STRUCTURAL STEEL FOR MISCELLANEOUS PIECES TO CONFORM TO ASTM A36 STEEL.
 3. ALL WELDING SHALL BE IN ACCORDANCE WITH AWS D1.1 "STRUCTURAL WELDING CODE - STEEL", LATEST EDITION. WELDING SHALL BE WITH E70XX ELECTRODES.
 4. ALL WELDERS SHALL BE AWS CERTIFIED AND SHALL PROVIDE THE ENGINEER WITH PROOF OF CERTIFICATION.

BILL OF MATERIAL							
S	Qty	Description	Length	Mark	Mat. Grade	Remarks	Weight
NO			FT	IN			
	ONE	TRASH RACK SPACING PANEL			1M1		2222
	84	PIPE 3/4 STD (SCHED 40)	0	3	hss4	A500B	PIPE
	16	FB1 1/2 x 2 1/4	0	4	fb8	A36	END SPACER
	15	FB2 1/2 x 4	20	0	fb10	A572-50	TRASH RACK
	2	FB3 1/2 x 4	4	3	fb5	A572-50	TOP & BASE PLATE
	6	FB4 1/2 x 4	0	3	fb7	A36	CONNECTOR PLATE
	6	RB3	4	3	rb3	A36	THREADED ROD
	12	3/8 JAM NUT & WASHER					27

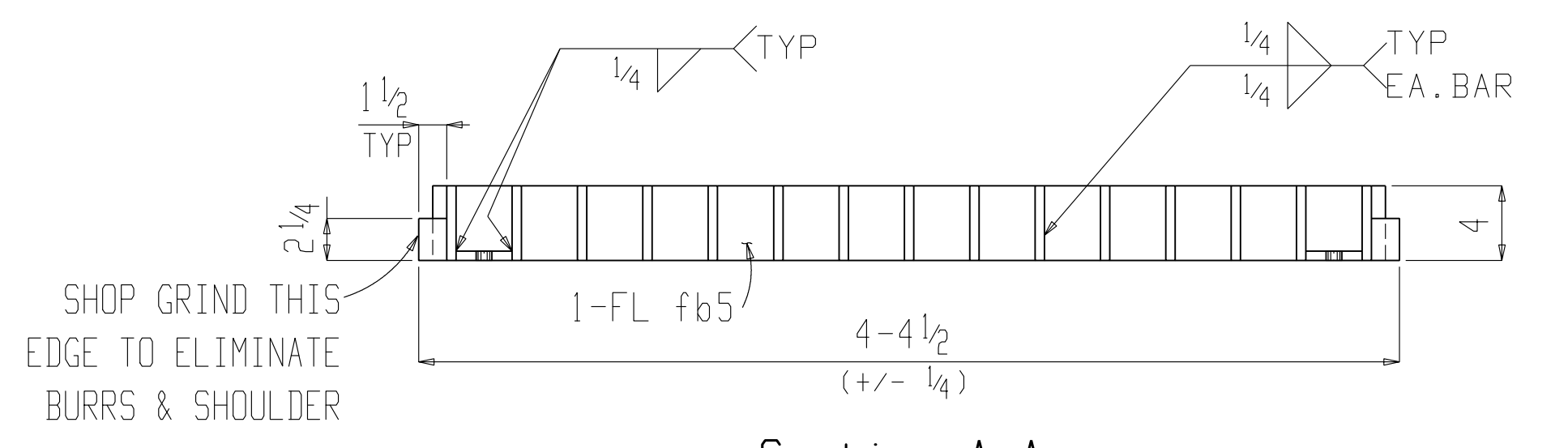
NOTE:
THESE PLATES WILL BE SHIPPED LOOSE AND FIELD WELDED



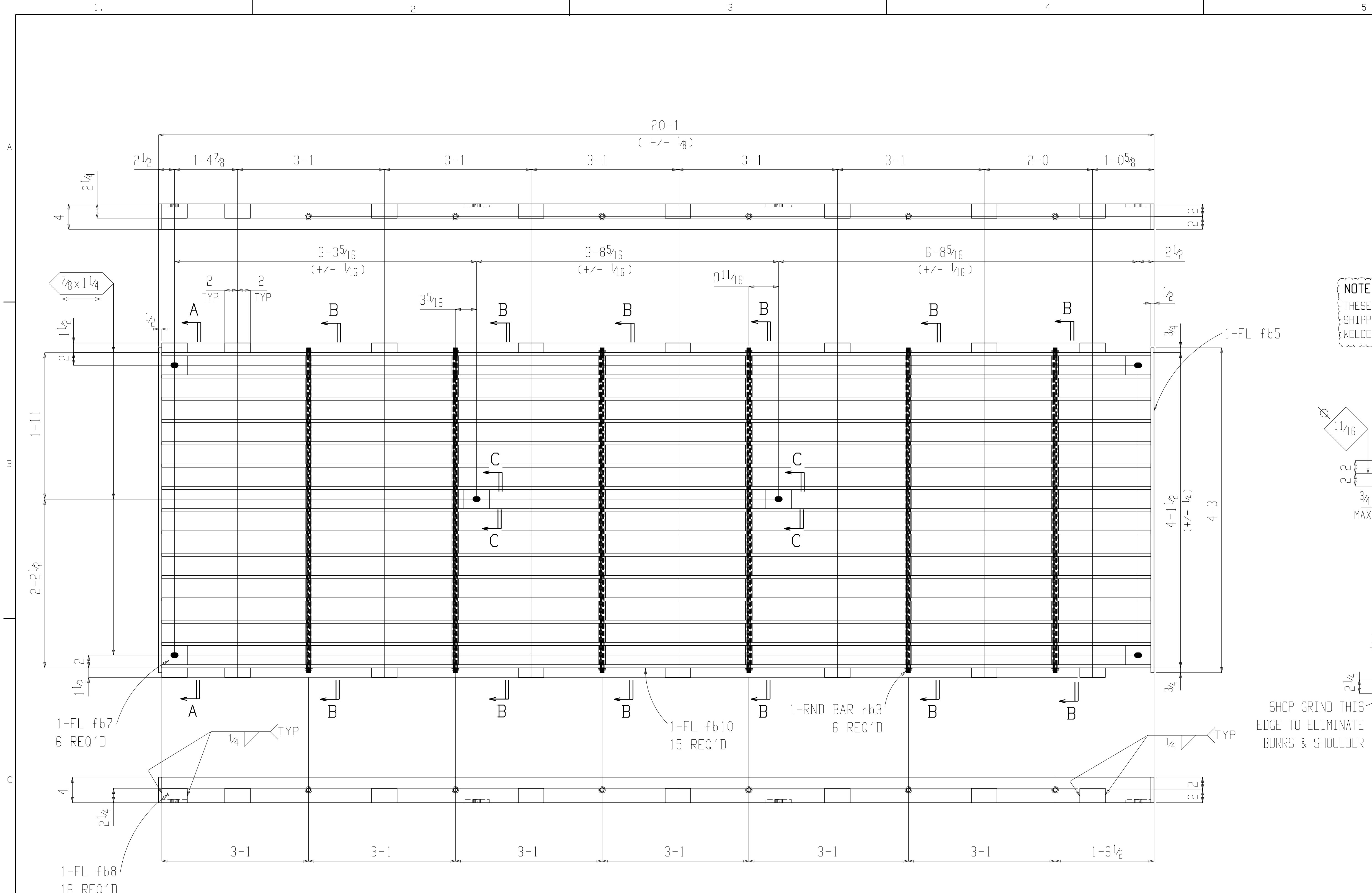
Section C-C
1M1



Section B-B
1M1

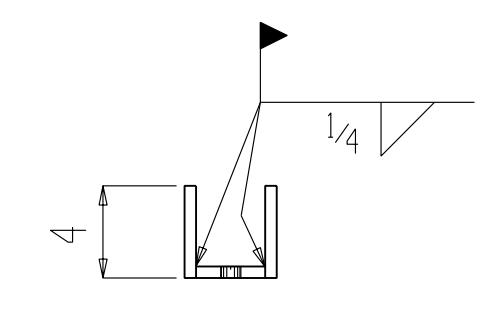


Section A-A
1M1

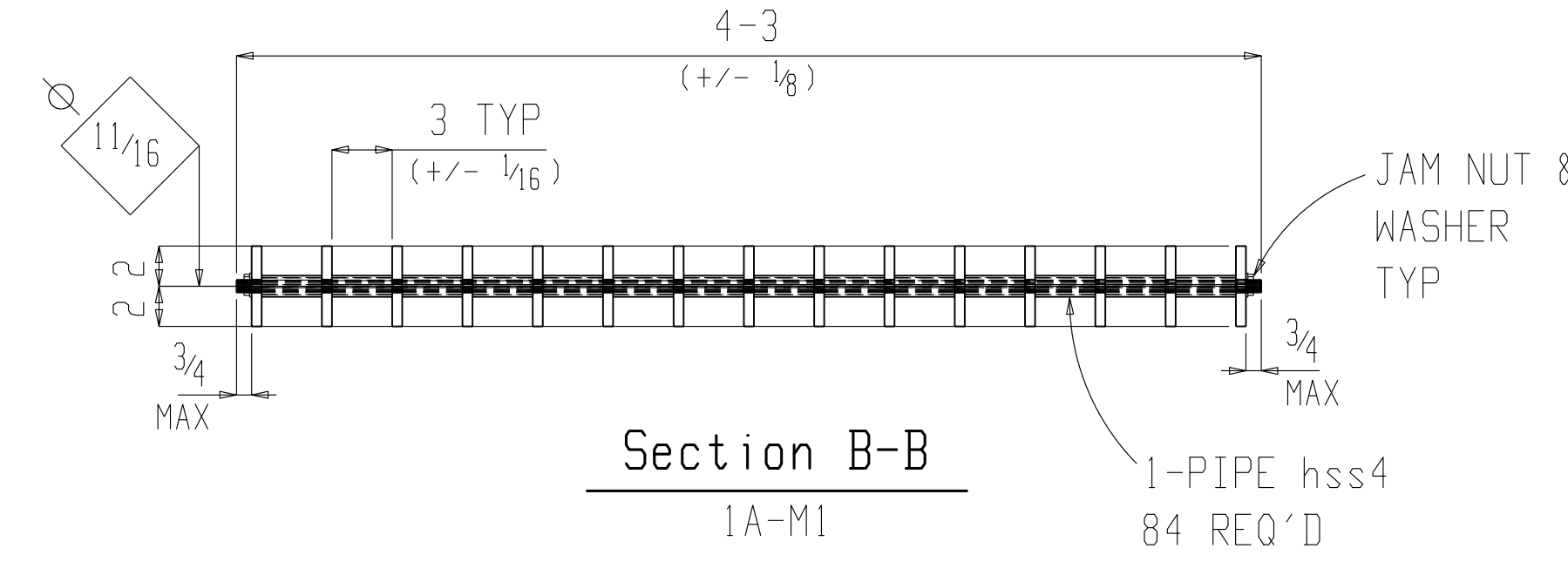


BILL OF MATERIAL									
S F C O	Qty	Description	Length		Mark	Mat. Grade	Remarks	Adv. Bill	Weight
			FT	IN					
	40	TRASH RACK SPACING PANEL			1A-M1				87920
	3360	PIPE 3/4 STD (SCHED 40)	0	3	hss4	A500B	PIPE		
	640	FB1 1/2 x 2 1/4	0	4	fb8	A36	END SPACER		2560
	600	FB1 1/2 x 4	20	0	fb10	A572-50	TRASH RACK		81600
	80	FB1 1/2 x 4	4	3	fb5	A572-50	TOP & BASE PLATE		2320
	240	FB1 1/2 x 4	0	3	fb7	A36	CONNECTOR PLATE		480
	240	RB3	4	3	rb3	A36	THREADED ROD		960
	480	3/8 JAM NUT & WASHER							

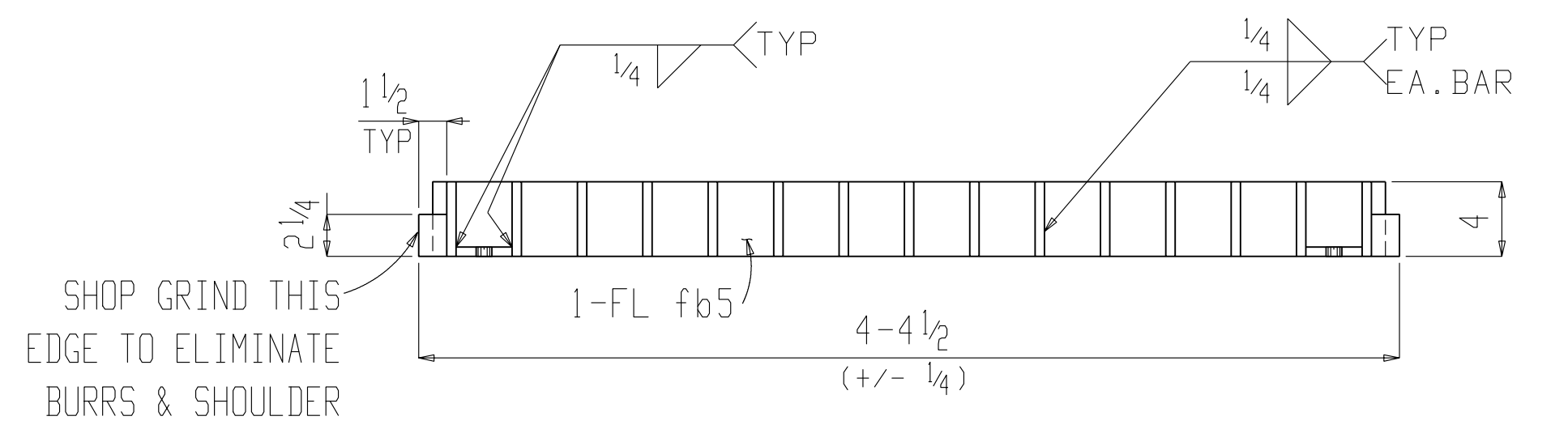
NOTE:
THESE PLATES WILL BE SHIPPED LOOSE AND FIELD WELDED



Section C-C
1A-M1



Section B-B
1A-M1

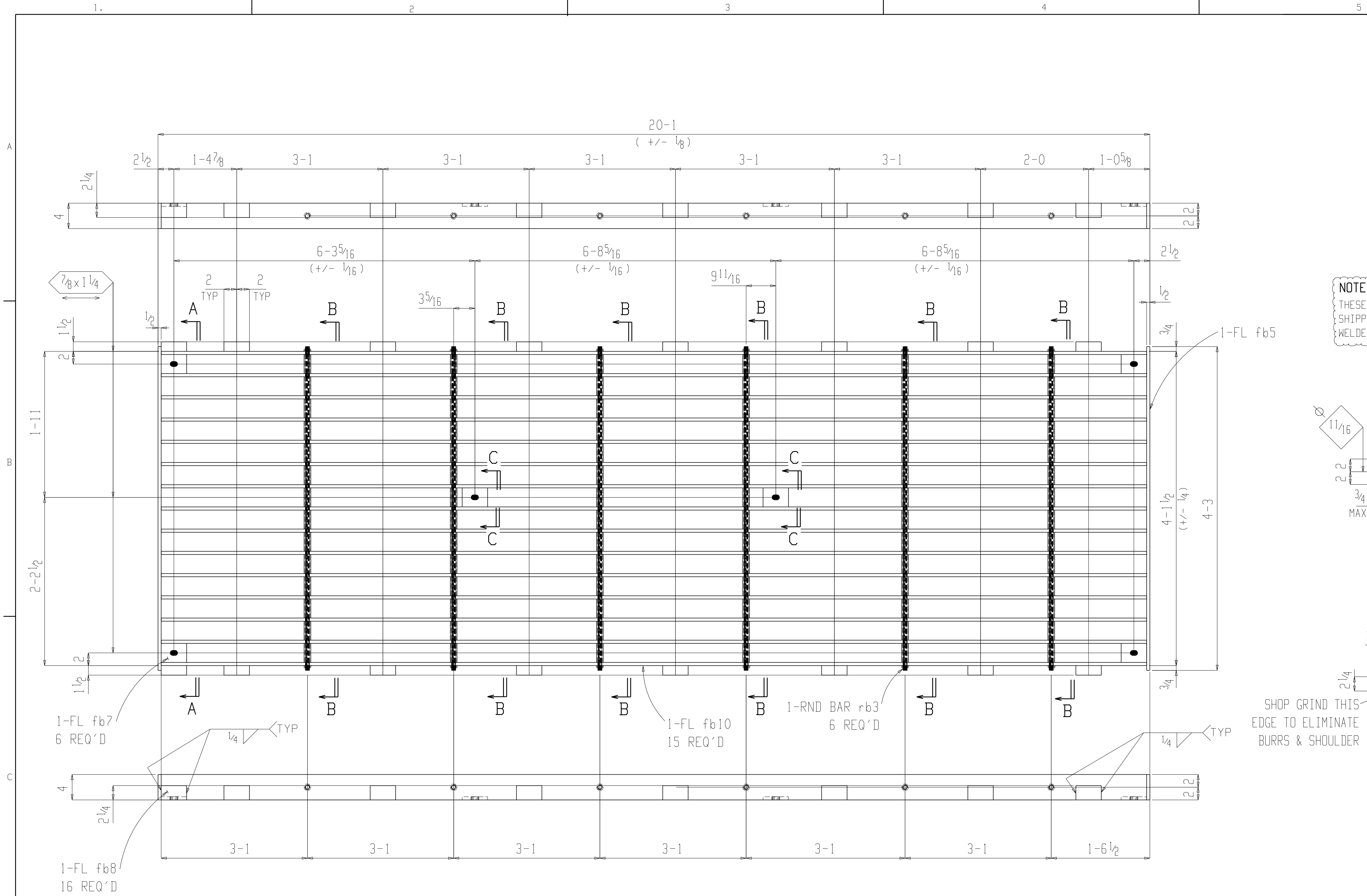


Section A-A
1A-M1

40 TRASH RACK 3" SPACING PANELS 1A-M1

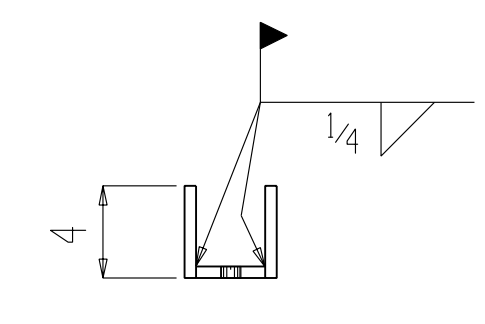
NOTE:

1. ALL WORK SHALL CONFORM TO THE STANDARDS LISTED IN THE AMERICAN INSTITUTE OF STEEL CONSTRUCTION (AISC) MANUAL OF STEEL CONSTRUCTION 13TH EDITION AND THE 2009 IBC CODE
2. ALL STRUCTURAL STEEL FOR THE TRASH RACK BARS SHALL CONFORM TO ASTM A572 WITH A YIELD STRESS OF 50 KSI EXCEPT AS NOTED. ALL PIPE FOR SPACERS TO CONFORM TO ASTM-A500 GRADE B. ALL STRUCTURAL STEEL FOR MISCELLANEOUS PIECES TO CONFORM TO ASTM A36 STEEL.
3. ALL WELDING SHALL BE IN ACCORDANCE WITH AWS D1.1 "STRUCTURAL WELDING CODE - STEEL", LATEST EDITION. WELDING SHALL BE WITH E70XX ELECTRODES.
4. ALL WELDERS SHALL BE AWS CERTIFIED AND SHALL PROVIDE THE ENGINEER WITH PROOF OF CERTIFICATION.

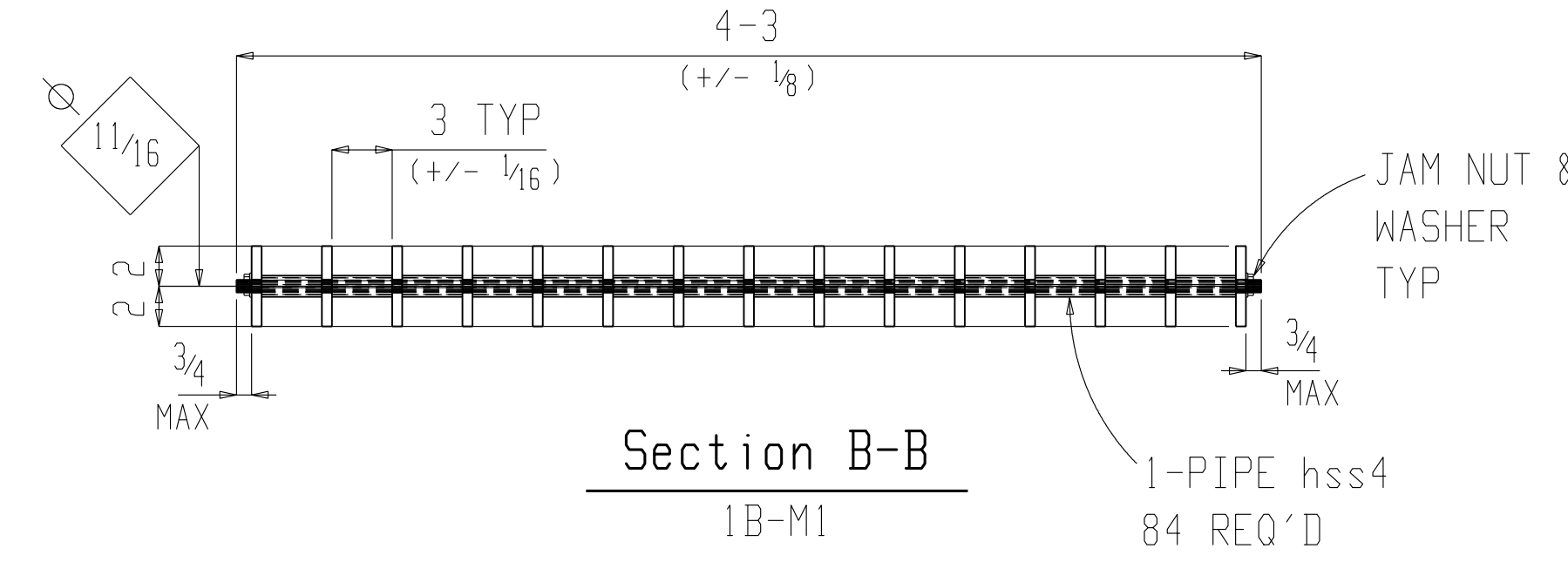


BILL OF MATERIAL									
S F C O	Qty	Description	Length		Mark	Mat. Grade	Remarks	Adv. Bill	Weight
			FT	IN					
	40	TRASH RACK SPACING PANEL			1B-M1				87920
	3360	PIPE 3/4 STD (SCHED 40)	0	3	hss4	A500B	PIPE		
	640	FB 1 1/2 x 2 1/4	0	4	fb8	A36	END SPACER		2560
	600	FB 1/2 x 4	20	0	fb10	A572-50	TRASH RACK		81600
	80	FB 1/2 x 4	4	3	fb5	A572-50	TOP & BASE PLATE		2320
	240	FB 1/2 x 4	0	3	fb7	A36	CONNECTOR PLATE		480
	240	RB 3	4	3	rb3	A36	THREADED ROD		960
	480	3/8 JAM NUT & WASHER							

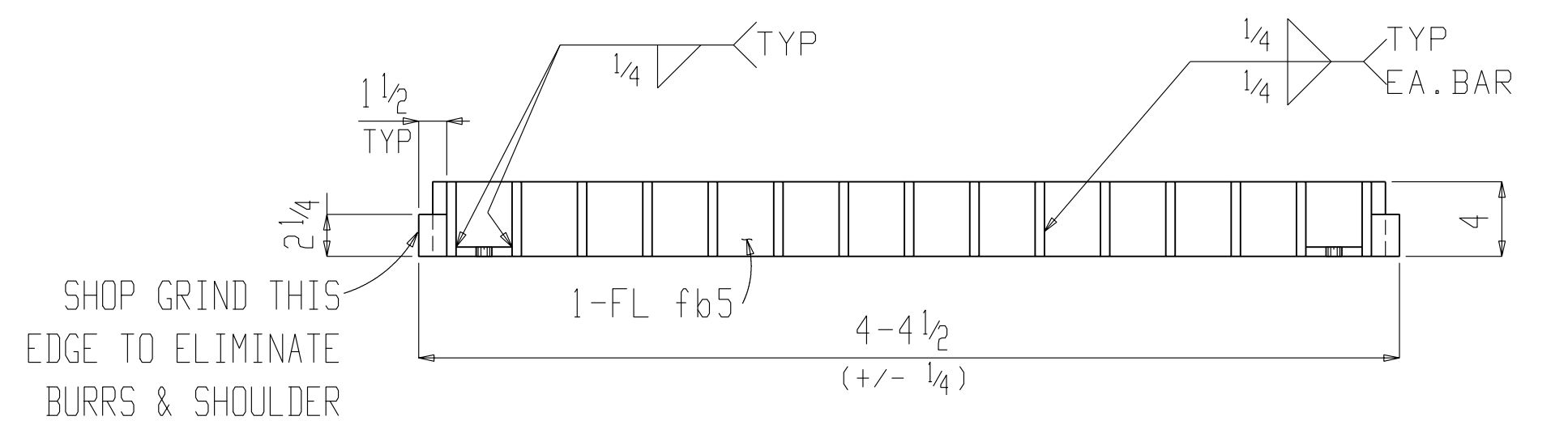
NOTE:
THESE PLATES WILL BE SHIPPED LOOSE AND FIELD WELDED



Section C-C
1B-M1



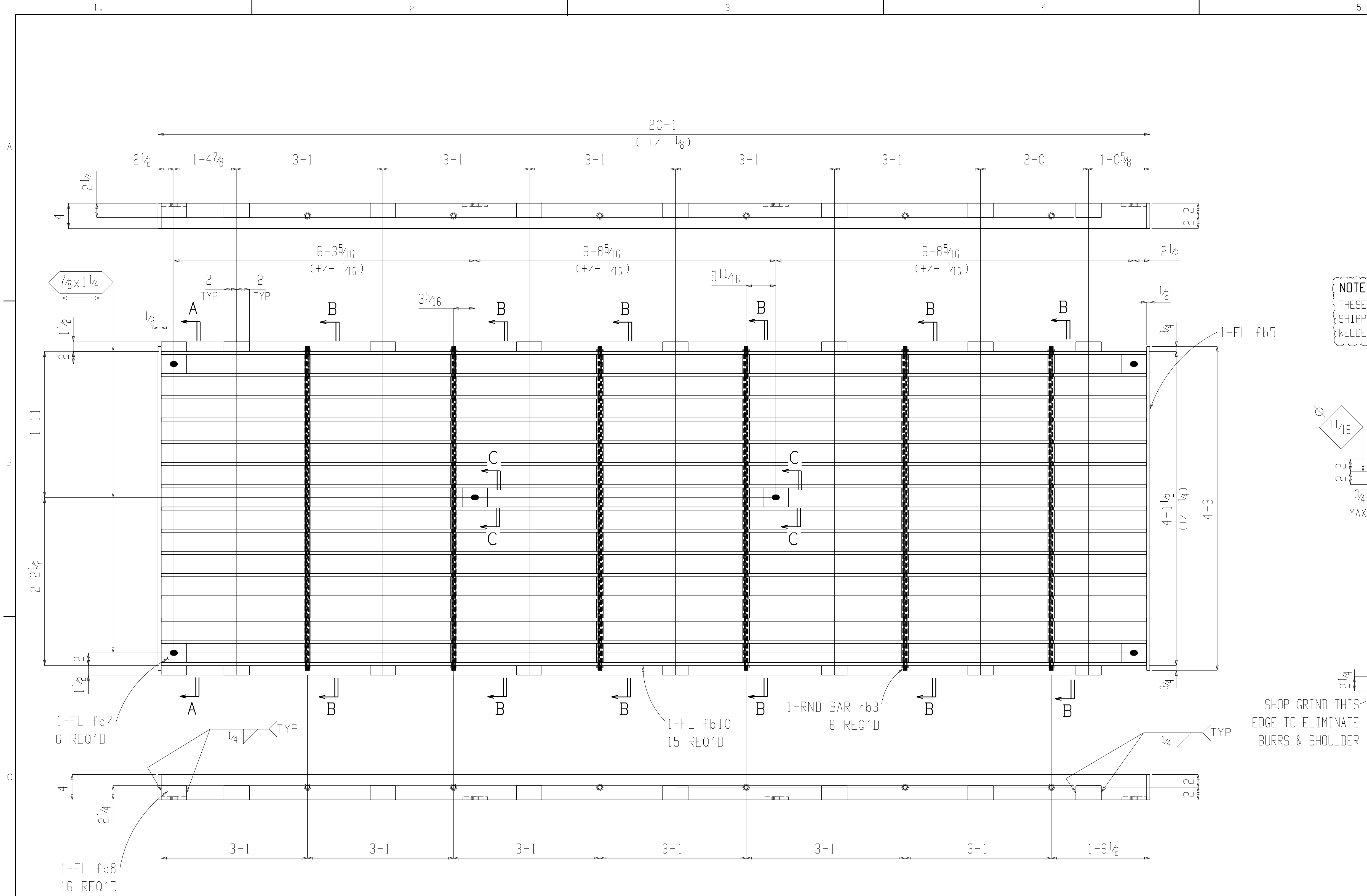
Section B-B
1B-M1



Section A-A
1B-M1

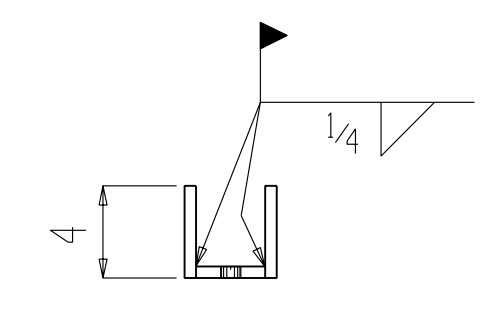
40 TRASH RACK 3" SPACING PANELS 1B-M1

- NOTE:**
1. ALL WORK SHALL CONFORM TO THE STANDARDS LISTED IN THE AMERICAN INSTITUTE OF STEEL CONSTRUCTION (AISC) MANUAL OF STEEL CONSTRUCTION 13TH EDITION AND THE 2009 IBC CODE
 2. ALL STRUCTURAL STEEL FOR THE TRASH RACK BARS SHALL CONFORM TO ASTM A572 WITH A YIELD STRESS OF 50 KSI EXCEPT AS NOTED. ALL PIPE FOR SPACERS TO CONFORM TO ASTM-A500 GRADE B. ALL STRUCTURAL STEEL FOR MISCELLANEOUS PIECES TO CONFORM TO ASTM A36 STEEL.
 3. ALL WELDING SHALL BE IN ACCORDANCE WITH AWS D1.1 "STRUCTURAL WELDING CODE - STEEL", LATEST EDITION. WELDING SHALL BE WITH E70XX ELECTRODES.
 4. ALL WELDERS SHALL BE AWS CERTIFIED AND SHALL PROVIDE THE ENGINEER WITH PROOF OF CERTIFICATION.

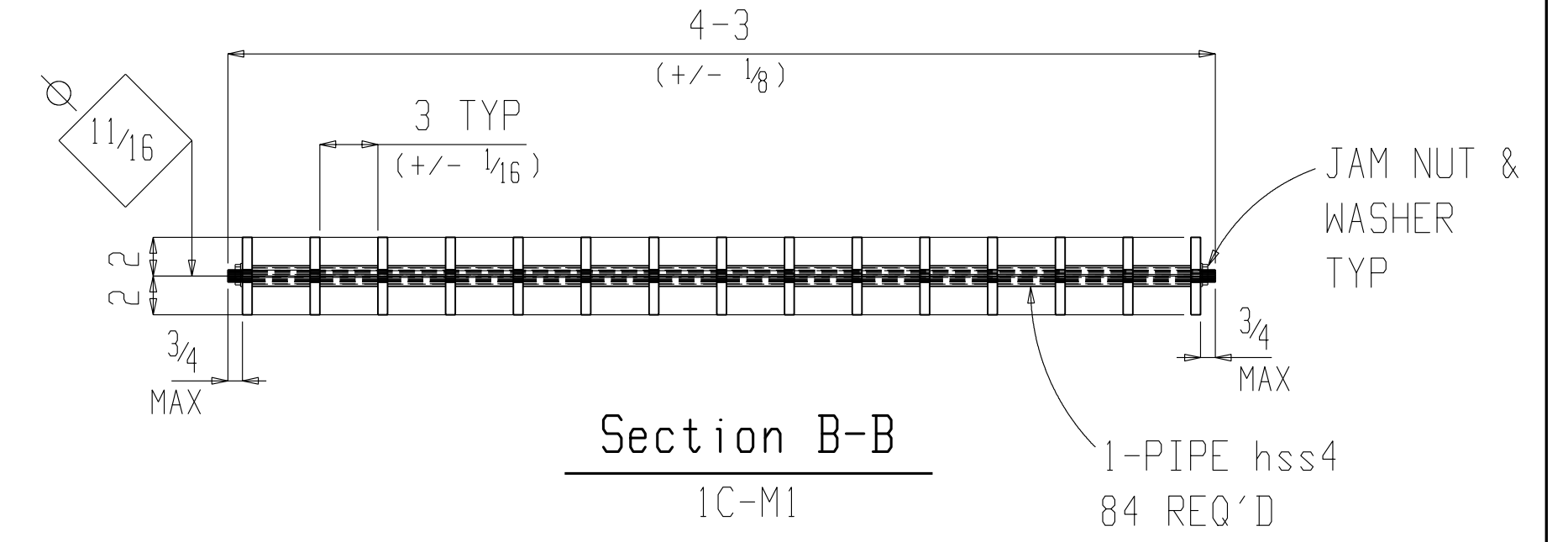


BILL OF MATERIAL									
S F C O	Qty	Description	Length		Mark	Mat. Grade	Remarks	Adv. Bill	Weight
			FT	IN					
	32	TRASH RACK SPACING PANEL			1C-M1				70336
	2688	PIPE 3/4 STD (SCHED 40)	0	3	hss4	A500B	PIPE		
	512	FBI 1/2x2 1/4	0	4	fb8	A36	END SPACER		2048
	480	FBI 1/2x4	20	0	fb10	A572-50	TRASH RACK		65280
	64	FBI 1/2x4	4	3	fb5	A572-50	TOP & BASE PLATE		1856
	192	FBI 1/2x4	0	3	fb7	A36	CONNECTOR PLATE		384
	192	RB3	4	3	rb3	A36	THREADED ROD		768
	384	5/8 JAM NUT & WASHER							

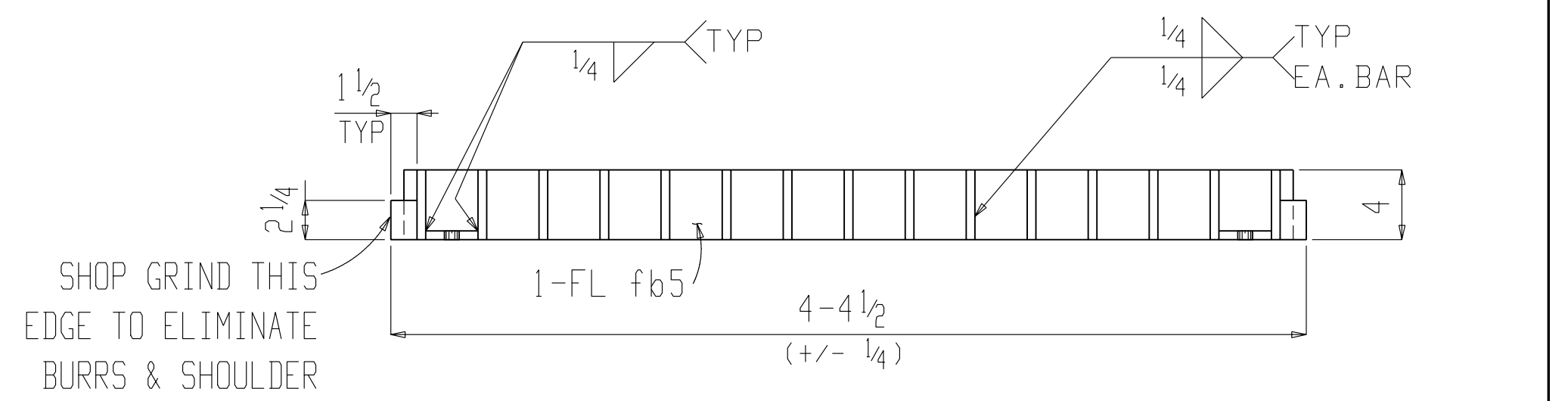
NOTE:
THESE PLATES WILL BE SHIPPED LOOSE AND FIELD WELDED



Section C-C
1C-M1



Section B-B
1C-M1

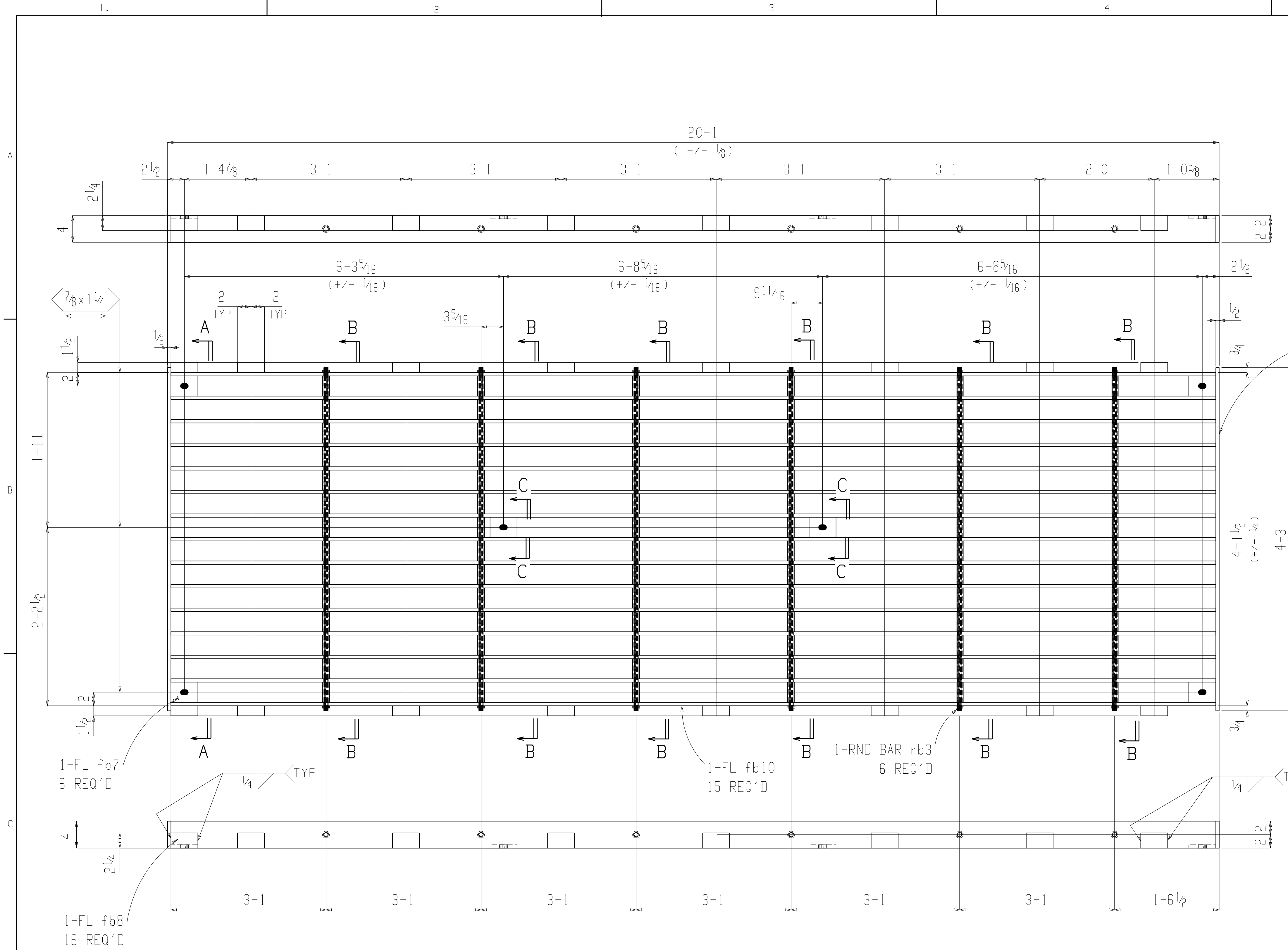


Section A-A
1C-M1

32 TRASH RACK 3" SPACING PANELS 1C-M1

NOTE:

1. ALL WORK SHALL CONFORM TO THE STANDARDS LISTED IN THE AMERICAN INSTITUTE OF STEEL CONSTRUCTION (AISC) MANUAL OF STEEL CONSTRUCTION 13TH EDITION AND THE 2009 IBC CODE
2. ALL STRUCTURAL STEEL FOR THE TRASH RACK BARS SHALL CONFORM TO ASTM A572 WITH A YIELD STRESS OF 50 KSI EXCEPT AS NOTED. ALL PIPE FOR SPACERS TO CONFORM TO ASTM-A500 GRADE B. ALL STRUCTURAL STEEL FOR MISCELLANEOUS PIECES TO CONFORM TO ASTM A36 STEEL.
3. ALL WELDING SHALL BE IN ACCORDANCE WITH AWS D1.1 "STRUCTURAL WELDING CODE - STEEL", LATEST EDITION. WELDING SHALL BE WITH E70XX ELECTRODES.
4. ALL WELDERS SHALL BE AWS CERTIFIED AND SHALL PROVIDE THE ENGINEER WITH PROOF OF CERTIFICATION.

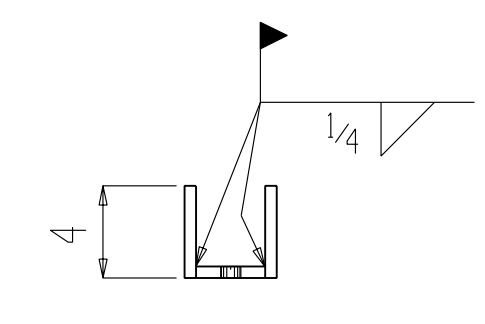


32 TRASH RACK 3" SPACING PANELS 1D-M1

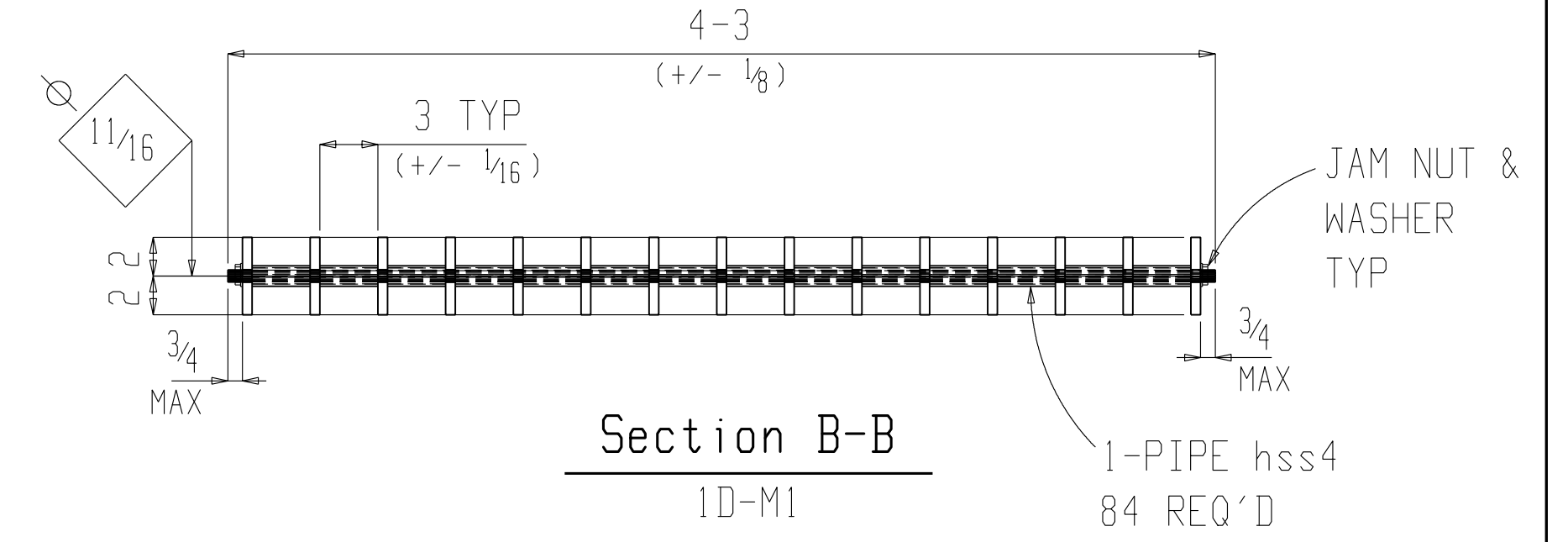
- NOTE:**
1. ALL WORK SHALL CONFORM TO THE STANDARDS LISTED IN THE AMERICAN INSTITUTE OF STEEL CONSTRUCTION (AISC) MANUAL OF STEEL CONSTRUCTION 13TH EDITION AND THE 2009 IBC CODE
 2. ALL STRUCTURAL STEEL FOR THE TRASH RACK BARS SHALL CONFORM TO ASTM A572 WITH A YIELD STRESS OF 50 KSI EXCEPT AS NOTED. ALL PIPE FOR SPACERS TO CONFORM TO ASTM-A500 GRADE B. ALL STRUCTURAL STEEL FOR MISCELLANEOUS PIECES TO CONFORM TO ASTM A36 STEEL.
 3. ALL WELDING SHALL BE IN ACCORDANCE WITH AWS D1.1 "STRUCTURAL WELDING CODE - STEEL", LATEST EDITION. WELDING SHALL BE WITH E70XX ELECTRODES.
 4. ALL WELDERS SHALL BE AWS CERTIFIED AND SHALL PROVIDE THE ENGINEER WITH PROOF OF CERTIFICATION.

BILL OF MATERIAL									
S F C O	Qty	Description	Length		Mark	Mat. Grade	Remarks	Adv. Bill	Weight
			FT	IN					
	32	TRASH RACK SPACING PANEL			1D-M1				70336
	2688	PIPE 3/4 STD (SCHED 40)	0	3	hss4	A500B	PIPE		
	512	FB1 1/2 x 2 1/4	0	4	fb8	A36	END SPACER		2048
	480	FB1 1/2 x 4	20	0	fb10	A572-50	TRASH RACK		65280
	64	FB1 1/2 x 4	4	3	fb5	A572-50	TOP & BASE PLATE		1856
	192	FB1 1/2 x 4	0	3	fb7	A36	CONNECTOR PLATE		384
	192	RB3	4	3	rb3	A36	THREADED ROD		768
	384	3/8 JAM NUT & WASHER							

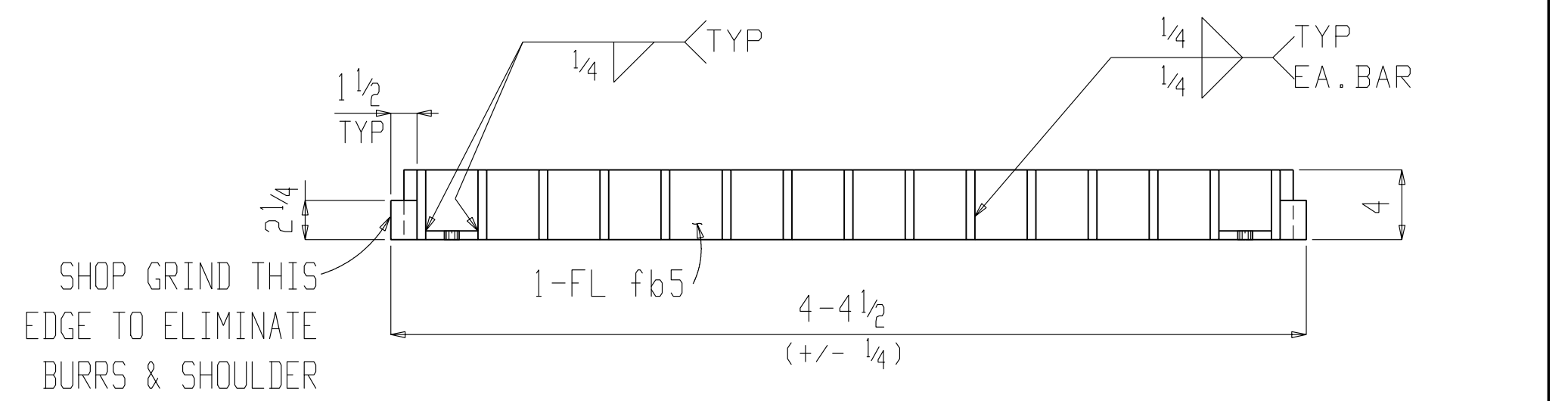
NOTE:
THESE PLATES WILL BE SHIPPED LOOSE AND FIELD WELDED



Section C-C
1D-M1



Section B-B
1D-M1



Section A-A
1D-M1